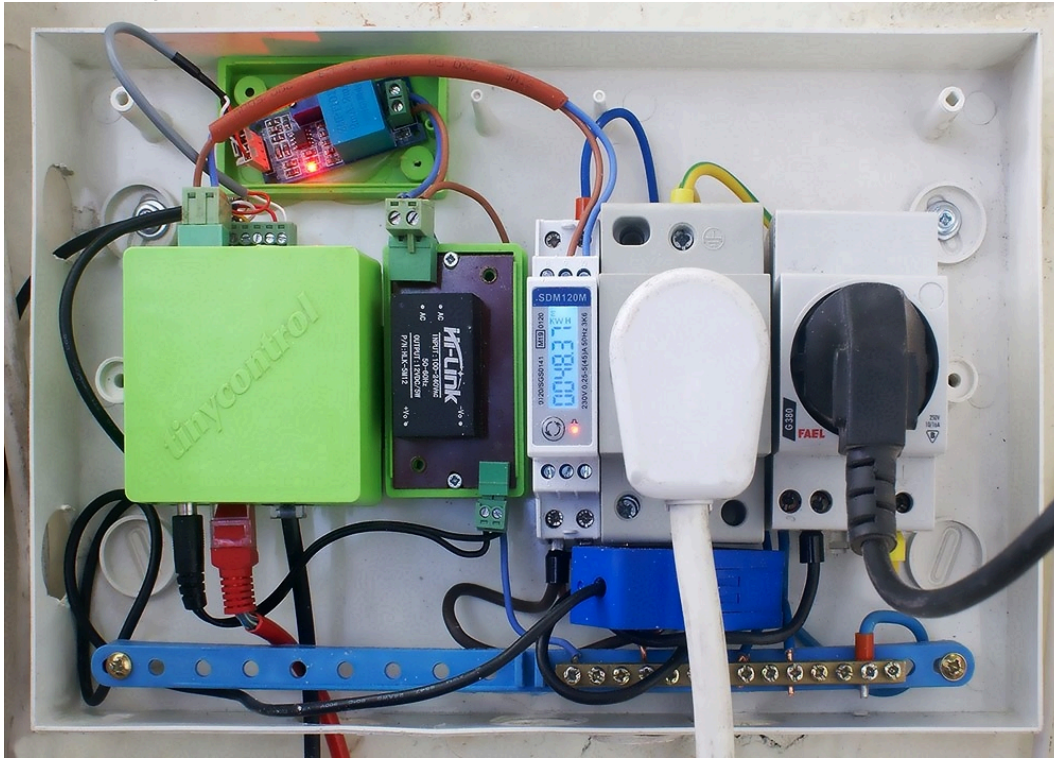


Frekvence: 50/60 Hz
Proud (I_b): 5 A
Max. proud (I_{max}): 45 A
Min. proud (I_{min}): 0,25 A

Příklad zapojení:



Data z elektroměru:

LK3 SW 1.54b | HW 3.0 Settings Sign out

Status

Status for user:

Choose one device connected to LK3 by serial port. If you do not use any devices set OFF!

If you connect the SDM120 for the first time, you need to change the bitrate if it is different than 9600. On the SDM120 hold down the button until you get to the SET display, then click the button below a few times.

[Change bitrate from 2400 to 9600](#)

Input	Value	Unit
Voltage (sdm1)	0.00	V
Current (sdm2)	0.00	A
Active Power (sdm3)	0.00	W
Apparent power (sdm4)	0.00	VA
Reactive power (sdm5)	0.00	Var
Power factor (sdm6)	0.00	
Phase angle (sdm7)	0.00	Degrees
Frequency (sdm8)	0.00	Hz
Import active energy (sdm9)	0.00	kWh
Export active energy (sdm10)	0.00	kWh
Import reactive energy (sdm11)	0.00	kVarh
Export reactive energy (sdm12)	0.00	kVarh
Total active energy (sdm13)	0.00	kWh
Total reactive energy (sdm14)	0.00	kVarh

Serial Port

- Power and Energy
- Network
- Time
- Email
- HTTP Client
- MQTT Client
- Modbus TCP Server
- Remote control
- I2C and 1-Wire Sensors
- SNMP
- Access
- Firmware and Backup
- OLED